

Beyond Flexner:

Interprofessional Education and Health Equity



The Shade Tree Health Clinic



History and Inception

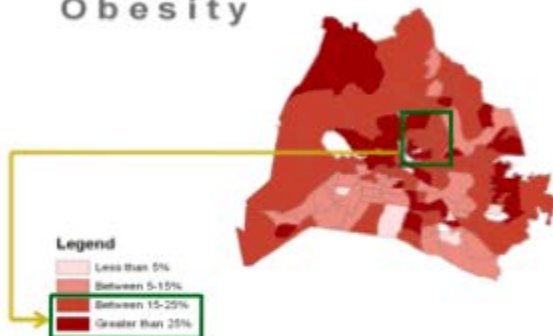
- Second year medical student project in collaboration with the School of Medicine
- Opened in October 2005
- Began as double wide trailer in East Nashville



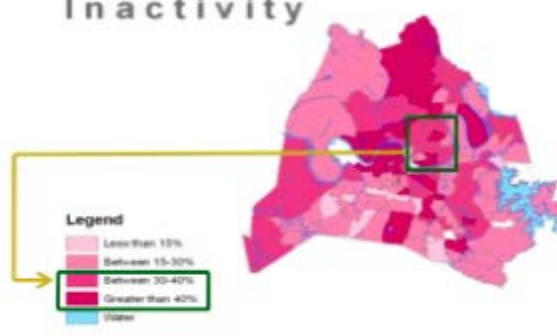


Risk Factors in Nashville

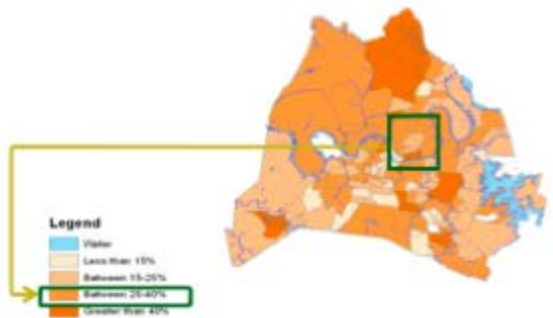
Obesity



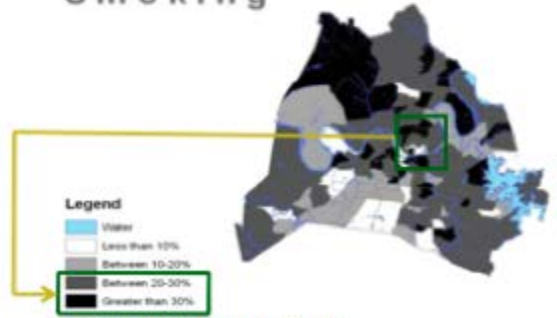
Inactivity



High Cholesterol



Smoking



Data: Nashville REACH 2006

<http://healthbehavior.psy.vanderbilt.edu/reach/status.htm>



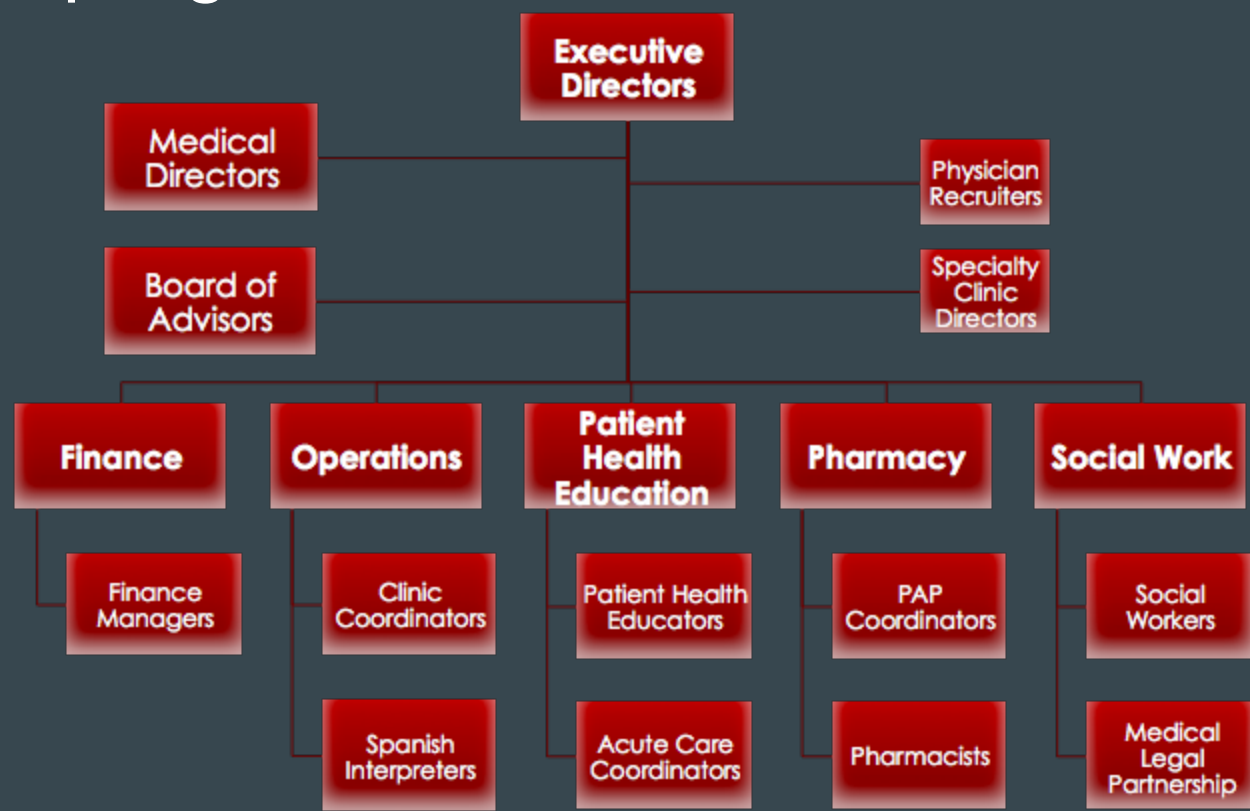
Shade Tree Clinic Today

- Moved to permanent building through partnership with local clinic
- Twice weekly clinic: Tuesday evenings and Saturday afternoons
- Greater than 350 uninsured and underinsured patients
- Over 100 student staff members
- More than 50 Provider volunteers





Leadership organization





Services

- Primary Care
- Specialty Care at Shade Tree Clinic
 - STEPP
 - Neurology
 - Ophthalmology
 - PT/Orthopedics
 - Gynecology
 - Weight Loss
 - Psychiatry
 - Rheumatology
 - Urology
 - Dermatology
 - Cardiology
 - Nephrology
- Specialty care at Vanderbilt
- Services and tests





Student Involvement

- Clinical volunteers:
 - Clinical student
 - Preclinical student
 - Student observer
- Staff:
 - Clinic coordinator
 - Patient health educator
 - Social worker
 - Pharmacy assistant
 - Finance manager
 - Spanish interpreter
 - Acute care coordinator
 - Specialty clinic director





Clinical Shadowing Opportunities

- Robust shadowing program
 - Vanderbilt graduate, nursing, and undergraduate students
 - Visiting medical and undergraduate students
 - Often with their own similar student run clinic
 - High school students





Dispensary and PAP

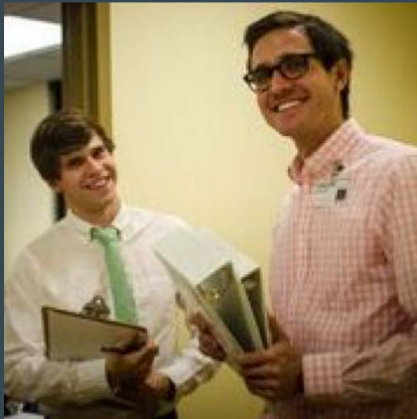
- All medications are provided to patients on-site and free of charge
 - Volunteers have filled more than 14,000 prescriptions and dispensed over 1,075,000 individual pills, inhalers, or vials of insulin since 2006.
 - In the past 3 years alone, the pills dispensed has seen an average annual growth of 39.3%
- Staffed by medical and pharmacy students
- New relationship with the University of Tennessee School of Pharmacy
 - Embed pharmacy students on clinical teams
 - Provide School of Pharmacy faculty as preceptors
- Patient Assistance Program
 - Work with VUMC to apply for expensive medication qualifying patients
 - Insulin, inhalers, Harvoni





Spanish Interpreting

- ~25 Spanish interpreters who volunteer at clinic, including:
 - Medical Students
 - Nursing Students
 - Graduate Students
 - Undergraduate Students
- Vanderbilt University “Spanish for the Medical Profession” Course





Nutrition

- Work with Vanderbilt's Dietetic Internship program to provide individualized nutritional care to our patients
 - 10 month post-baccalaureate program with 16 interns
- At least one intern is available at every clinic session and works with patient health educators to provide education to patients
- Fills an important hole in medical student and clinician expertise
 - Patient population is particularly at risk for obesity and DM2





Social work

- Clinical Social Worker and medical, nursing, law, and social work students
- Identify and address social determinants of health
- Student-lead projects including: vision, dental, mental health/counseling, housing, education/employment, LGBTQI, and Spanish
- Intake screening form plus yearly in person review
- Transitions of Care
 - Identify patients who qualify for Tennessee Medicaid and Medicare
 - Connect patients to resources to sign up for insurance plans
 - Find patients in-network provider and an affordable medication plan





Middle Tennessee Medical-Legal Partnership

- Practicing lawyer from the Legal Aid society along with Vanderbilt University Law students
- Services provided include immigration, disability, asylum
- Law students work with student social workers on yearly screenings
- Of 308 patients screened in 2015:
 - Needs identified: 15% Immigration status, 64% Disability, 5.3% Legal problems
 - Needs addressed: 10.4% Immigration, 21.1% Disability, 13.2% Legal
- Presented model and clinical outcomes at national conferences including the MLP Summit



Dental



- Oral and Maxillofacial Surgery resident in collaboration with the OMFS clinic at Vanderbilt Medical Center
- Partnership with local dental clinic for dental cleanings and minor procedures
- Bi-Monthly clinic
- Clinic Process:
 - Referral placed by clinical team
 - Student social work schedules patients for clinic
 - OMFS resident does initial screening at Shade Tree
 - Patients referred to surgery clinic or dental clinic on evaluation





Early Pregnancy Program

- Collaboration of nurse-midwife students and medical students
- Roles include scheduling patients and student teams, recruiting attendings (physicians and midwives), following up on laboratory studies and ultrasounds
- Student social worker helps enroll patients in Coverkids and connect patients with resources such as food and clothing
- Transition patients to OB practice for remainder of pregnancy





Vaccine Outreach

- Initiative to provide flu vaccinations to vulnerable populations
- Dedicated committee composed of medical and nursing students
- During the 2015-2016 flu season, the project:
 - Organized 13 different vaccination events in a variety of settings
 - Administered vaccines to 453 individuals
 - 9% identified as homeless
 - 66% reported that they were uninsured
 - 20% reported that this was their first flu vaccination
- Over 75% of those who received vaccinations were minorities





Conclusion

- We are privileged to be able to provide medical care to our patient population
- Truly comprehensive care *requires* that we reach out to our medical and non-medical colleagues for help.



Discussion Points

- How to create an interprofessional leadership model in a medical clinic?
- How to foster bi-directional learning between the different interprofessional students?
- How to integrate interprofessional faculty into our clinic?
- What other groups, outside of health-care professions, could we use to diversify our clinic services?

Contact Information

- Jule West, MD. Shade Tree Medical Director: jule.west@vanderbilt.edu
- Emily Buttigieg, VMSIV. Shade Tree Executive Director: emily.m.buttigieg@vanderbilt.edu

Special Thanks to:

- Michael Fowler, MD. And Robert Miller, MD. Shade Tree Medical Directors
- Whitney Muhlestein, VMSIV. Shade Tree Executive Director